

Oranka<sup>®</sup>  
juice solutions

The image features a solid teal background. In the center, the word "Oranka" is written in a large, white, sans-serif font, with a registered trademark symbol (®) to its upper right. Below it, the words "juice solutions" are written in a smaller, white, sans-serif font. At the bottom of the image, there are three white, curved lines that sweep across the width of the page, creating a sense of motion and design.



*Originally starting out over 75 years ago; from these humble beginnings Oranka have become bigger, better and even more dedicated to the hospitality sector.*

# Hi, we're Oranka

We're here to make your life easier. People love quality and your customers are no different. So, whatever your fruit juice and smoothie needs, we know we can come up with the perfect approach.

## **What we're all about:**

We want to make you look good! This is why our products, dispensing and presentation solutions are designed to give your customers well presented healthier drink options, balanced through-out the day...whatever your hospitality environment!

***Our mission is to be the natural choice for juice solutions through innovation, quality products, exceptional customer service with a social and environmental conscience.***

**FREE ON LOAN DISPENSERS\* | NO CONTRACTS**

## **Extensive choice**

Freshly pressed, not from concentrate, ice teas or multivitamin drinks...or maybe vitamin packed super juices and smoothies.

## **Variety and diversity**

Seasonal flavours, organic, Fairtrade and low sugar products suitable for diabetics.

## **Tailored approach**

We've been around a while, so know what works whether for a hotel, spa, leisure, travel hub, foodservice, education or care setting.

## **Ideal day parted solution**

Easily adapt and change your drinks, flavours and dispensers to suit the time of day.

## **Join up seamlessly**

Tried and tested dispensing and presentation concepts, with juices that can be stored at room temperature unopened for 12 months and reduce packaging waste by up to 95%.

\*Minimum usage applies



Working with the industry :



Oranka Juice Solution at HRC



# Breakfast Service Concept

Give your guest the very best start to their day...Enjoy a choice of premium quality juices and smoothies.

## Full Service Hotels

Scale up your breakfast juice offering with one of our ready to drink premium Not From Concentrate (NFC) Juices. Help offset the cost by mix and matching with our NFC Nectar Orange Juice and our premium Hydration Juices. While also having the opportunity to add a stylish touch to your dispensing solutions with a number of upgradable options.

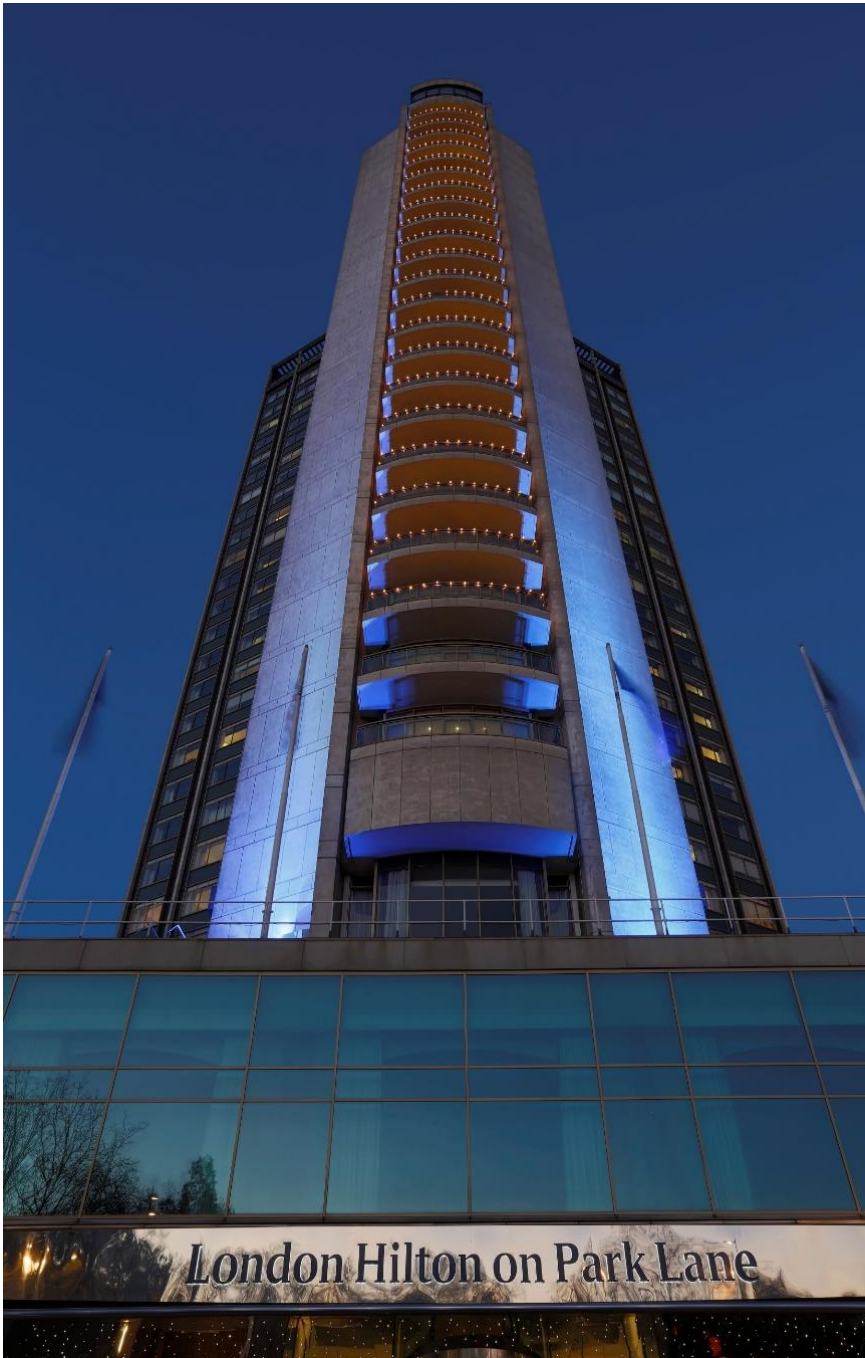
### *Work in partnership with Oranka*

- Create a point of difference – add colour.
- **Save up to 50%** by using premium hydration juice drinks such as 1+19 Cloudy Apple and 1+19 Redberry.
- For price sensitive venues you can select our new 1+9 Premium Orange Nectar along with our premium 1+19 Hydration Juices Drink.

[CLICK HERE>> To find out more about how you can offset the cost of premium choices with our natural hydration juice drinks.](#)



Our concentrates can also save up to 95% storage, 95% packaging wastage and 95% labour vs Tetra Pak, better for you and better for our planet.



## Full Service Hotels

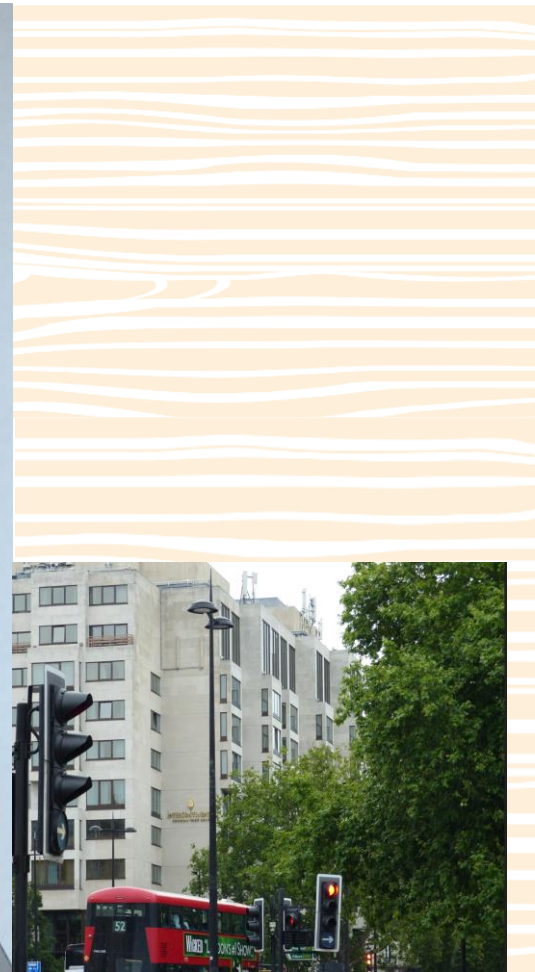


*"Juice is the lifeblood of our breakfast service and the ultimate quality in orange juice is essential."*

*Every guest expects the best with us, which is why we only offer Freshly Pressed Orange Juice from Oranka in our Executive Lounge."*

**Chef Marshall,  
Hilton Park Lane**





*“Core to our guest experience is our breakfast juice offering.*

*It is therefore critical that we get it right. With Oranka we are easily able to achieve this, combining premium juices with various different dispensing options depending on the environment. Take our exclusive Club InterContinental Lounge – here we serve a selection of refreshing, chilled juices using the stylish Finesse Dispensers.”*

**Lalit Kumar, Executive Chef**  
**Intercontinental London Park Lane**



*"We are passionate about ensuring our guests receive the best experience when visiting one of our hotels and there isn't anything more important than quality, variety, service, and healthy choices.*

*The Oranka solution offers a vast range of juices and smoothies suitable for breakfast, meetings, lounges and breakout areas.. The equipment elevates the offering and creates an eye-catching visual appeal."*

**Stephen Roach, IHG Director of Food & Beverage  
Managed & Luxury UK&I**



**Proud to supply the IHG Managed properties including their flagship – Intercontinental Park Lane, London**







## Focus Service Hotels

Enjoy juice on tap with incredibly easy to use dispensing solutions. Enjoy 1+9 Premium Orange Nectar Juice, with no plumbed in dispenser required. Benefit from Yorkshire Dispensers provided free on loan. For busier operations, create two separate juice station points to split the queue.

Help offset the cost by introducing our Premium Hydration Juice Drink range for additional flavours. For example, save up to 50% by switching the 100% Apple to our 1+19 Cloudy Apple and Cranberry to our 1+19 Redberry Juice Drink.

### *Create up to 95% less packaging waste*

- 95% reduction in storage space required
- Minimised transportation emissions with a reduction in electricity consumption and product wastage

[CLICK HERE>> To explore how to create greater flavour variety and reduce overall costs by combining with our 1+19 premium hydration juices – 21 flavours available!](#)

*“The Arora Group prides itself on quality, which is why we are delighted to work with Oranka Juice Solutions, as they reflect these principles in their juices, their dispensing solutions and their customer care.”*

**Bartosz Delikat, Senior Group Purchasing Manager  
The Arora Group**

# Focus Service Hotels





## Simply adopt the Oranka equation

And you can offer a premium juice or smoothie...

Choose 1 or 2 Hydration Juices  
with 20% fruit juice...



...and the lower  
economical price

...offsets the

cost of...



...offering a premium  
juice such as NFC and  
smoothies



*“By cleverly re-thinking our juice offering, we’ve been able to increase our juice quality, without impacting on the overall orange juice cost.”*

**Dean Crews - Director of Food and Beverage  
Kew Green Hotels**



*“The dynamics of our hotel and the number of employees we have, meant that we wanted a supplier that could cater to both our guests and to our staff needs.*

*So interestingly, Oranka Juice Solutions came up with a product range including smoothies, and a dispensing solution that really suited both very different environments.”*

**Steve Munkley, Vice President  
The Craft Guild of Chefs**



# Oranka's Juicy Tips



- Feature a minimum of two juice flavours, ensuring orange is one of them
- Use a larger breakfast juice glass for juices only (not for smoothies)
- Use a 2oz shot glass for smoothies from the Smoothie Cube



Choose the right type of orange juice for your venue\*

- 5\* Premium 100% freshly pressed orange juice
- 4\* / 5\* 100% NFC orange juice with pulp
- 3\* / 4\* Brazil nectar orange juice with pulp
- Focused Service** high volume 1+5 100% orange juice



Use the perfect dispensing option for your environment\*:

- |                      |   |
|----------------------|---|
| <b>High volume:</b>  | Use Bravanti plumbed in dispenser   |
| <b>Large volume:</b> | Use Yorkshire on copper risers or Smoothie Cube dispensers<br>- maybe have two for the orange to split the queue                  |
| <b>Small volume:</b> | Use Yorkshires on copper risers, as there is a 3 day refrigerated shelf life on product use 1 litre carafe or 2.2 litre glass jug |



Change the flavours in the Smoothie Cube and add variety e.g. use freshly pressed cloudy lemonade and maximise opportunities by moving to the bar for the rest of the day.  
Use a funky 2oz shot glass with approx. 20 pre-filled (5 x 4) to help reduce the cost of the super smoothie

\*This is provided as a guide, as some venues choose different options to suit their specific needs.



Selection of Hydration Juices in Yorkshire Dispensers

## Make the most of your Breakfast Service...

Ensure relevant fruit is always displayed on top of cube.



Maintain cleanliness and merchandising standards with regular checks.

Relevant flavour is always showing on the front.



Ensure appropriate POS materials are used.



*Finesse Dispenser with Orange Juice*



*“Such a great range of concepts in terms of display and taste.*

*The range of products allows us greater variety from the norm and seasonal options. Not to mention the product consistency, labour and equipment cost savings were a strong driver for us.*

*The costs just stacked up compared to our existing offering, so it was an obvious decision to switch to Oranka.”*

**Christopher Cloonan, Group Executive Chef  
Champneys Resort**









# Hospitality, Meetings & Events

## **Improve productivity and energise...**

Just when minds are flagging, create the ultimate drinks offering to restore energy and focus attention. The formats are endless from a range of enticing juices and smoothies in a centralised break-out space, to the more intimate approach of drinks served directly into rooms using jugs, infusion pitcher or carafes. Premium ready to drink juices and smoothies can be served from stylish wooden Smoothie Cubes, alongside chilled glass dispensers with high quality 20% fruit juice Hydration Juice all packed with vitamins to boost concentration levels.



*Hilton Hydration Station*



Hospitality concept at AMEX in Brighton

1 litre plastic carafe with lid



London Hilton Metropole



London Hilton Wembley



*“At CAVU we manage several airport lounges including Manchester, East Midlands and Stansted. It is therefore important our offering features a delicious range of quality juice and smoothie choices, with some great looking dispensing options.*

*And, we have achieved exactly that with Oranka!*

*The combination of flavours with the stylish Finesse and Juice Cube dispensers creates just the look and service we were looking for.”*

**Andrew Jackson ,Food & Beverage Development Manager  
CAVU**

*“Working with Oranka has meant that we have been able to tailor our juice approach to meet the demands of high volume catering that our events typically require.*

*This has been in terms of both juice type and flavour, but also the dispensing format to make sure we have absolutely the right offering to suit the environment.”*

**Ian Page, Executive Chef  
Payne & Gunter**



## Create a tailored hospitality, meetings and events offering



Ensure relevant fruit is always displayed on top of cube.



Display on own counters or on Oranka's natural wood counters.



Clearly show flavours using correct signage relates to the product such as Oranka A5 or A7 Strut cards (recommend A7), chalkboards or labels.

Maintain cleanliness and merchandising standards with regular checks.



Serve directly to meeting rooms with 1.5 Superior Jugs, 1 litre carafe, 2.5 litre Fill Line Jug and Infusion Pitcher.

*“The Hydration Station is perfect at combining all the benefits of a healthy, low sugar drink with the association of fresh fruit. The result is a great range of 21 flavours and an enticing drinks offering with great margin opportunities.”*

**Kamil Malec, Group Executive Chef  
Lexington Catering – Elior**



As part of our new innovative C&E project - 'Break-Out' - for the Hilton Group, we needed an equally original and flexible juice and smoothie solution. So, Oranka were an obvious choice, as I knew they offered a pioneering range of dispensing systems and a diverse range of healthy drinks, while also delivering great customer service and follow-up.

Anthony Worrall, Hilton Worldwide's Regional Director of Food and Beverage, UK, Ireland and Israel



*Premium Multi-Vitamin Nectar  
Juice Served in Smoothie Cube*

# Retail Concepts

## **Tailored approaches to enhance every retail environment**

Encourage customers to help themselves...be that from self pour to Grab 'n' Go. Entice them with a myriad of delicious drinks and flavours including juices, smoothies and hydration juices.

Tried and tested formats, which work equally well in leisure venues, coffee shops and staff dining. Independent schools also use these set-ups using Schools Food Trust approved juices and can easily respond to significant service increase for Summer Schools with extra equipment such as jerry cans for outside activities and match teas.



*Hydration Station with Hydration Juice  
in Yorkshire Dispensers on Copper Risers*





*Yorkshire Dispensers on Copper Riser*

# Hydration Station Concept

## **The ultimate appealing and thirst quenching concept...**

The celebrated Hydration Station unites all the benefits of fresh fruit with Oranka's Hydration Juice. This unique and enticing free-pour, help yourself concept easily forms part of a day parted menu and can be tailored to the season from the 21 delicious flavours available.

A quality 20% fruit juice, with no preservatives or colourants, these drinks are naturally high in Vitamin C and low in sugar (2%), so are suitable for diabetics.



*Hydration Station with Signage*



*“At Merlin Entertainments, we believe in providing our visitors with a breadth of choice when it comes to eating and drinking.*

*Oranka Juice Solutions have added to our healthier portfolio and provided a great tasting range of products, particularly to our hotel breakfast buffets and our Park Pizza Pasta restaurants.”*

**Natalie Fox, Group F&B,  
Merlin Entertainments PLC**





Yorkshire Dispenser

## Encourage help yourself, free pour with Hydration Station...

Add to the appeal with contrasting drink colours.

When appropriate clearly show drink price.



Maintain cleanliness and merchandising standards with regular checks.



Ensure relevant glasses, cups, lids and straws are available and kept next to dispenser.



Smoothies in Walnut Smoothie Cubes and Selection of Juices in Yorkshire Dispensers

Use correct signage that relates to the product on sale such as Oranka strut cards.

# How to guide to the Yorkshire Hydration Dispenser

Hydration Juices are supplied in cases of 12 x 0.5 litre cartons. Each 0.5 litres makes 10 litres of final product once mixed with water. Ambient storage of up to 12 months on unopened cartons. Open cartons have a 30 day refrigerated shelf life. When 2.5 litre fill line jug filled it has a 5 day refrigerated shelf life. When Yorkshire dispenser is filled with juice it has a 3 day shelf life if refrigerated out of service times.



1

Unpack dispenser, remove green label. Ensure tap is in closed position.



2

Tighten tap – push tap against glass to compress rubber washer and allow tightening of nut. Rinse dispenser.



3

Use the 2.5 litre Fill Line Jug to mix hydration juice. Fill concentrate to 1+19 marker point.



4

Fill jug with water to the 2.5litre marker point.



5

Separate and remove diffuser tube from ice tube. Fill ice tube with ice or with water and freeze. Only fill with 70% water to avoid tube spitting following expansion during freezing.



6

Using hydration juice mixed in fill line jug – fill the dispenser & insert ice tube. Screw metal lid on top.



7

Place strut display card next to, or on top of dispenser – here the Yorkshire Dispenser is displayed in a group of four on two copper risers.



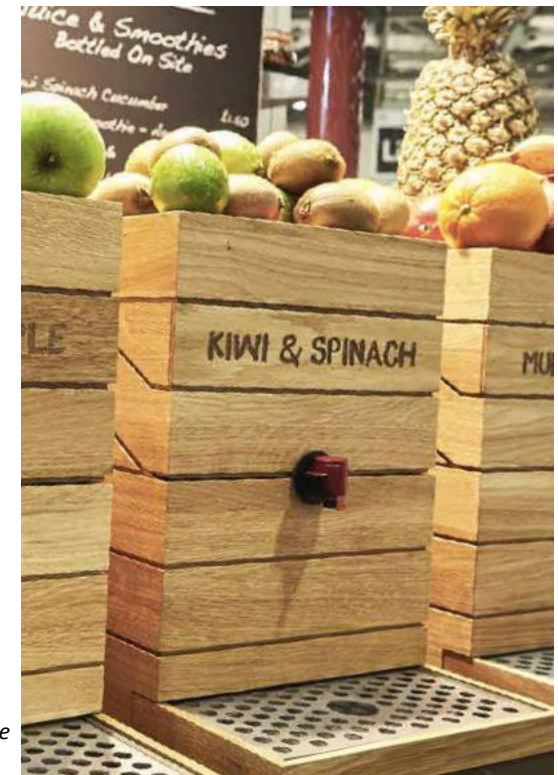
*Multi-Vitamin in  
Smoothie Cube*

# Smoothie Cube Concept

## **A premium, stylish option to increase appeal...**

Our Smoothie Cube is ideally suited for a superior offering or bespoke boutique service. The sophisticated wooden crate-style dispenser works well with ready to drink smoothies and creates a fabulous display with relevant fruits piled on top.

Easily positioned the Smoothie Cube can be moved to fit with any venue's flow of traffic and create a consistent customer flow. It also competes directly with high street brand smoothies, but will deliver significantly more GP, particularly when used within meal deals.



*Kiwi, Spinach, Cucumber and Lime Super Smoothie  
in Natural Smoothie Cube*



*“At ExCel we are obviously familiar with successfully managing large scale events, but our success does also rely on the teams we use to help us deliver.*

*Therefore, we strive to work with similar minded companies like Oranka Juice Solutions who are able to just get on the job and be trusted to deliver to the agreement without fuss.”*

**Richard Lechley, General Manager  
at Compass Group UK & Ireland**

*“Our members expect quality. This is why we work with a juice supplier like Oranka, who reflect these principles.*

*NFC orange and apple juice presented in the innovative Smoothie Cube in our Clubs creates the perfect complement to our drinks offering, and the juice is a great base for making our smoothies.”*

**Debs Thomas,  
Head of Food and Beverage,  
David Lloyd Clubs**

# Oranka's Juicy Tips



Easily positioned, so simply find the right position for the Smoothie Cube to maintain a flow of traffic



Increase visual impact with 2 or 3 Smoothie Cubes in a row



Mix up the flavour options through-out the week



Ensure it is clear how to get a drink with visible signage, glasses and recyclable cups



Great as part of a day parted menu for breakfast or lunch meal deals



Convey health benefits using point of sale signage and when appropriate ensure it is obvious it is part of a meal deal or have the cup price displayed

Inside of the Smoothie Cube showing the 2x ice packs to keep drinks cool



Interchangeable carved wooden signage

Create fresh look with relevant fruit on top



Flip box for easy access and refill for the 5 litre Juice Bag

Integral drip tray

# How to guide to the Smoothie Cube Dispenser

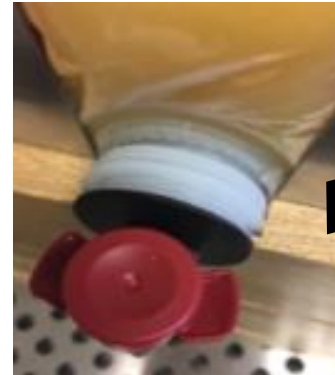
Smoothie Cube products are supplied in 2 x 5 litre bag in box (with tap). Ambient storage of up to 9 months. Once opened the product must be kept chilled (use ice packs during service and refrigerate out of service). Once opened and chilled the product has a 5 day shelf life.



1 Remove lid to enable smoothie to be placed inside.



2 Place smoothie into cube.



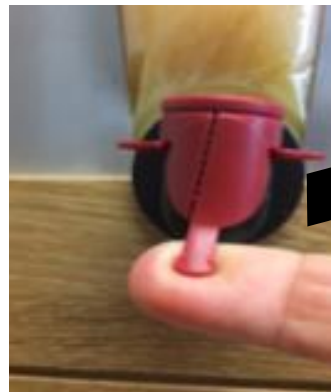
3 Position tap on smoothie in to the grooved recess at the front of the cube.



4 Place ice packs either side of the juice bag.



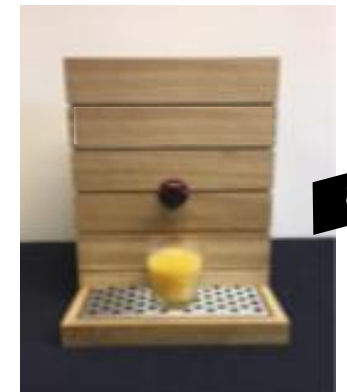
5 Position the lid securely back on the base of the cube.



6 Open smoothie by pulling perforated tab off tap.



7 Affix the interchangeable display fascia to the front of the cube.



8 Smoothie Cube is now ready for use.



# Juice Lab Concept

**Choose from a rainbow of colours and mix the flavours up**

Utilising aspects of the free-pour hydration station, the Juice Lab adds a fun dynamic to any setting and is particularly appealing to children.

The low sugar (just 2%) Hydration Juice in chilled, glass Yorkshire dispensers encourages people to help themselves and even take a bottle from the till and mix their flavours for a bit of healthy fun. The extensive range of flavours are naturally high in Vitamin C, with some having added Zinc. Works brilliantly for Kids Meal Deals in exciting and dynamic leisure venues, but is equally successfully in travel hubs, cafes and staff dining environments.



*“The Juice Lab from Oranka is perfect as part of our Kids Bites meal deal at Leeds Castle. The kids love mixing up the drinks and the Hydration Juice easily fulfils our focus on offering healthy, quality food and drink options.”*

**Megan Caulkett General Manager,  
Compass Group**



# Oranka's Juicy Tips



Great for children and perfect for kids meal deals



Carefully consider the flow of customer traffic in your venue to find the ideal space for the Juice Lab



Choose a rainbow of drink flavours with contrasting colours to increase appeal



Recommend three dispenser with flavour chosen from a selection:

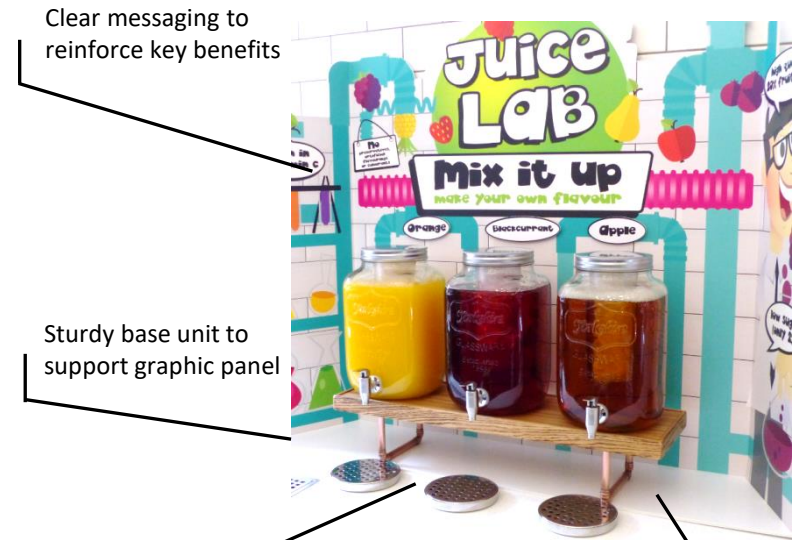
- Apple
- Orange
- Lemon
- Blackcurrant
- Strawberry
- Tropical
- Lime
- Blueberry



Ensure it is clear how to get a drink with visible signage, glasses and recyclable cups



Convey health benefits using point of sale signage and when appropriate ensure it is obvious it is part of a meal deal or the cup price is displayed



Clear messaging to reinforce key benefits

Sturdy base unit to support graphic panel

Maintain cleanliness and merchandising standards with regular checks

Place Juice Lab on own counter or Oranka Juice Station

*"The Juice Lab from Oranka is perfect as part of our Kids Bites meal deal at Leeds Castle. The kids love mixing up the drinks and the Hydration Juice easily fulfils our focus on offering healthy, quality food and drink options."*

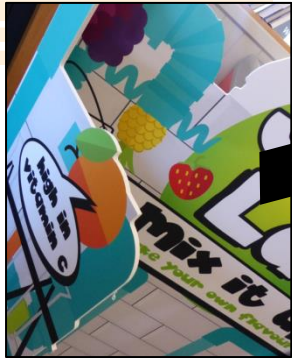
**Megan Caulkett General Manager, Compass Group**



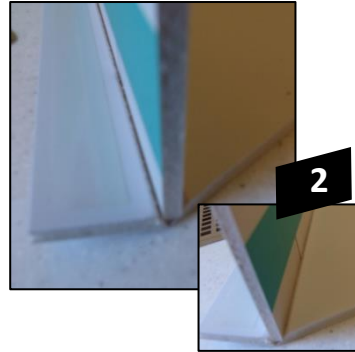


# How to guide for the Juice Lab

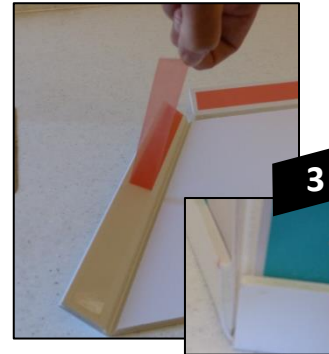
Hydration Juices are supplied in cases of 12 x 0.5 litre cartons. Each 0.5 litres makes 10 litres of final product once mixed with water. Ambient storage of up to 12 months on unopened cartons. Open cartons have a 30 day refrigerated shelf life. When 2.5 litre fill line jug filled it has a 5 day refrigerated shelf life. When the Yorkshire dispenser is filled with juice it has a 3 day shelf life if refrigerated out of service times.



Unpack the graphics (back and base panels). With the 'man' to the left as you look at it gently fold out the side panels.



Place the base panel on the counter you are using and with the back panel upright align it on top. Ensure the upright panel sits on the base panel and not in the groove and the base folds up on the outside.



Holding the upright graphic peel the tape away from one section of the base. Once unpeeled the tape is very strong so make sure it's properly in position and lined up when you push it against the upright graphic.



Repeat to stick all three sides to the upright, position and add the copper riser. Make sure the riser is the front of the base unit with the drip tray completely flat on the counter.



Unpack dispensers, clean and rinse inside and out. Remove any packaging which may have settled in the tap. Ensure tap is in closed position. Separate and remove diffuser tube from ice tube. Fill ice tube with ice.



Place dispensers on riser. Take the right flavour labels, carefully remove one layer of the velcro dot, remove the tape from the reverse and position above the dispenser. Add the flavour label.



Use the 2.5L Fill Line Jug to mix the hydration juice. Fill the concentrate to 1+19 marker point, then fill the jug with water to the 2.5L marker point. Pour into dispenser, add the ice core and screw the metal lid on.



Repeat the filling of each dispenser and place on the riser lining up with the flavour labels. Add cups, information on pricing or how to use the Juice Lab as part of a meal deal.



# Grab n Go Concept

## Creating greater profit margins...

Rival the high street with your own branded bottles of juices and smoothies and create excellent returns. Reflect the seasons with the wide range of ready to drink flavours including premium freshly pressed, not from concentrate, organic juices and smoothies. Simply fill the 60ml, 150ml or 250ml recyclable bottles, add either our tailored, unbranded collars with allergen information compliant with Natasha's Law or your own label and you are ready to serve.

Create your own 'Super Shots' using the novel 60ml Arc bottles. Great retail opportunity and ideal for breakfast and meal deals, particularly when a variety of drinks are displayed in chilled units or in our ice trays.



*Ideal Grab 'n' Go Concept for Breakfast and Meal Deals*



*“The Hydration Station and Juice Cubes are working brilliantly in the Harrods staff café. The juices are proving really popular and are able to easily adapt to our catering needs, particularly as we can have anything from 5,000 employees rising to 8,000 people at the height of Christmas and the January sales.”*

**Dirk Devries, General Manager,  
Harrods, Compass Group**

*“For us the Grab ‘n’ Go concept from Oranka Juice Solutions offers a quality, nutritious drinks range. Easy to use, even in our busy environment; we are able to offer customers a diverse and interesting choice of flavours, coupled with appealing and enticing colours.”*

**Eric Lanlard,  
Proprietor of Cake Boy Boutique and  
Award Winning Master Patisier**

## Oranka’s Juicy Tips



Delivers better margins than branded high street juice and smoothie options and is not available directly on the high street



Great as part of breakfast or lunch meal deal



Choose the right bottle option for your venue from 60ml, 150ml or 250ml recyclable Arc Bottles with black lids



Bottle on site for that homemade appeal – add our tailored, unbranded collars or your own



Regularly change the flavour range to avoid drink fatigue and to illustrate freshness



Unopened product has ambient storage up to nine months, once opened it has a 30 day refrigerated shelf life, while filled bottles will stay fresh in the refrigerator for up to 5 days



## Great retail opportunities – ideal for breakfast and lunch meal deals



Choose from 60ml, 150ml or 250ml bottles

Make sure bottles are 5 deep on shelf per flavour



Fill back of nose using easy to use box, clip and top system



Position relevant collar with flavour and ingredient details



Use POS to illustrate flavour options available and price



# How to guide to the Grab 'n' Go Concept

Each 10 litre Juice Box will fill 166 x 60ml bottles, 66 x 150ml bottles or 40 x 250ml bottles. Ambient storage of up to 9 months. Once opened the boxes must be kept refrigerated and can be used for up to 30 days.



Mark the date of opening /use by on the Juice Box.



Press along the perforated edge to open the box.



Pull the tap hose through the perforated opening.



Slide the dispensing clip on to the tap hose.



With the dispensing clip secured, snip the tap hose open.



Squeeze the dispensing clip to pour the juice from the box.



Fill juice to the 'neck' of the bottle. Secure the lid on to the bottle.



Position the collar over the bottle.



# Hydration Care Concept

Every home is different, and every resident is unique. The hydration needs of a residential home are very different to those of a nursing home or dementia care where residents may not even realise they are thirsty. Making sure lives are as enriched as possible and people maintain independence is a priority.

Oranka's Hydration Care Concept offers an integrated approach providing a wide range of drink options combined with reliable approaches to increase hydration levels resulting in healthier residents with a noticeable increase in activity levels and vital vitamin intake.



# Oranka's Juicy Dehydration Facts



## Dehydration implications

- UTIs
- Pressure Sores
- Heart Disease
- Diabetes
- Constipation
- Falls
- Chest Infections
- Low Blood Pressure



## The financial cost

£2.3 billion per year is the estimated cost of falls to the NHS\*<sup>1</sup>



## The fall facts

50% of people older than 80 fall at least once a year\*<sup>1</sup>



## Dehydration is a key issue

700 deaths in care homes due to hydration almost 2 per week\*<sup>2</sup>

\*<sup>1</sup> NICE Guideline – Falls in older people

\*<sup>2</sup> NACC Presentation on website 'Dehydration can kill'



**Simply adopt  
the Oranka care  
equation**



## The unique Oranka Hydration Care Concept delivers on all the vital elements of hydration care



### Mix up the type of drinks

- Create variety
- Avoid drink fatigue
- Combine Hydration and Frisco juice with juices and pure fruit smoothies for greater calorific
- Generate drinking occasions to help those struggling to swallow
- Encourage even the reticent drinkers to increase their daily fluid intake



### Offer tempting flavours

- Tantalise with variety
- Choose several of the 21 flavours of Hydration Juice (20% fruit juice, naturally high in Vitamin C and suitable for diabetics with just 2% sugar)
- Change the flavours with the seasons and enhance with vitamin packed juices and smoothies such as 100% fruit strawberry smoothie



### Deliver through variety

- Make drinks readily accessible through different dispensing options to increase drinking
- Combine Hydration Station or Eskimo Dispensers with appealing fruit displays in lounges, dining or activity areas
- Support with carafes or jugs, such as the Fill Line jug on tables or into residents' rooms



### Increased hydration levels

- Less healthcare issues e.g. UTIs
- Healthier residents
- Enhanced nutritional values
- Increase in activity levels as fluid consumption increases and the cost of care reduces creating cost and operational efficiencies



Time spent preventing inadequate hydration



Less time dealing with associated problems



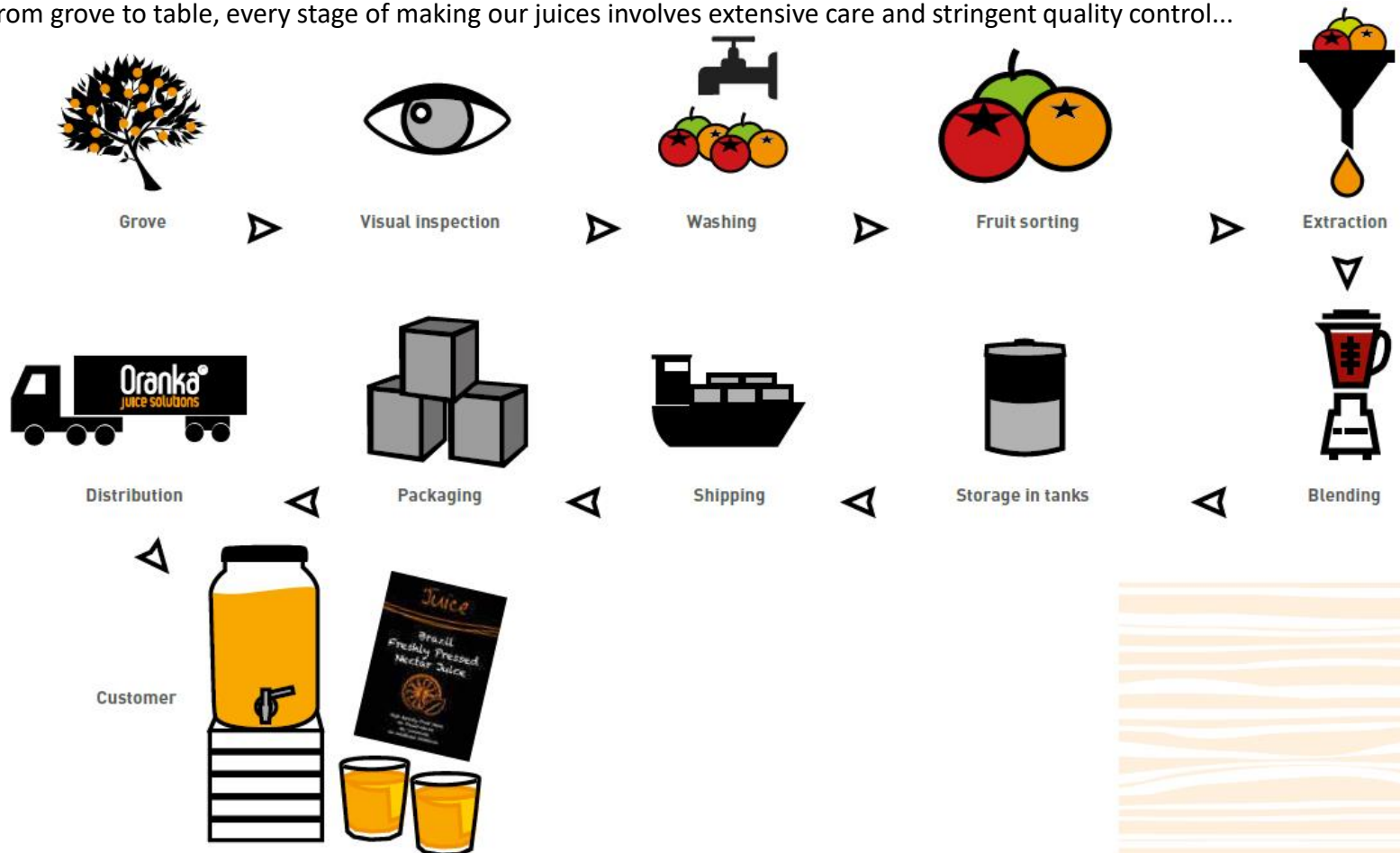
Reduction in cost of care





## Our Juice Production Process

From grove to table, every stage of making our juices involves extensive care and stringent quality control...





# Caring for our planet

## **Reduce...**

Always thinking about the environment, Oranka Juice Solutions has long provided effective ways to reduce packaging, which in turn has lowered emissions and reduced the cost of distribution.

## **Recycle...**

When you need to use plastic, our Grab 'n' Go bottles are made from 100% recycled materials and are recyclable. Also now available is the sustainable and fully recyclable Pop Up Cup.

## **Resources...**

All products are stored at ambient temperatures until opened, so Oranka actively helps reduce electricity costs and emissions, by ensuring products are only refrigerated when they are needed.

## **Returns...**

Responding to environmental concerns, reducing single plastic use and consolidating packaging results in a better use of resources, better use of time and is better for your budget.



## Presentation solutions

### Yorkshire dispenser

Modern, kilner style glass dispenser with a chilling ice core to make sure drinks remain cool. Featuring a 6.5 litre capacity, which can be used either singly on natural wood riser or in groups of 2 or 3 on copper & wood riser shelf on an existing counter if space allows.

Despite best intentions we appreciate accidents can happen. Oranka is very happy to replace the glass dispensers free of charge, but all replacements will be sent without a tap. So remember to keep the tap and should you need a complete dispenser with tap a charge will apply.

Item No: 900505



H.: 320 mm  
D.: 200 mm  
W.: 240 mm

### Smoothie cube

Encased in a smart wooden crate, this offers a premium front of house option for a selection of ready to drink smoothies. The 5 litre bag is easily inserted into the box and the dispenser is ready for service. It is supplied with interchangeable carved wooden signage, integral drip tray and double ice packs.

Item No: 900502 Oak Smoothie Cube  
Item No: 900514 Walnut Smoothie Cube



H.: 360 mm  
D.: 270 mm  
W.: 270 mm

### Acrylic dispenser

When space requires a sturdy, practical solution the Acrylic Dispenser with ice core delivers a stylish option which will also make a statement. Working equally well either on its own or as a group if you want to offer a variety of flavours, this dispenser can deliver 5.5 litres of drink.

Item No: 900512



## Presentation solutions



### Finesse dispenser

The Finesse Dispenser offers a stylish and superior look with its clear glass and polished stainless steel finish. The metal ice core keeps drinks deliciously cool and its simple metal stand offer a modern alternative to other drink dispensers. It has a 5 litre volume

*Available as a chargeable upgrade.*

Item No.: 900513

H.: 322 mm  
W.: 218 mm



### Noir dispenser

A modern, stylish dispenser with a 6 litre capacity and integral ice core to keep drinks cool. Works perfectly either on its own or in groups with the addition of the linking shelf for integrated displays.

*Available as a chargeable upgrade.*

Item No: 900518



**Free replacement glass for life** providing tap is retained and Oranka products used.

## Presentation solutions

### Copper riser

Enhancing the presentation options is an industrial style copper and wooden riser, which can be used for two or three dispensing formats. These are great for use on existing counters or a Juice Station, the riser is the perfect height for pouring drinks into a glass.

- Item No: 600075 - Copper riser for two dispensers
- 900504 - Copper riser for three dispensers
- 900515 - Walnut Copper riser for two dispensers
- 900516 - Walnut Copper riser for three dispensers



Riser Double	Riser Triple
H.: 150 mm	H.: 150 mm
D.: 480 mm	D.: 710 mm
W.: 210 mm	W.: 210 mm

### Juice station

Specially sourced, our natural or grey wood counter reflects a more rustic feel. Create a vibrant display with the Yorkshire dispensers on copper risers alongside delicious fresh fruit. This free-standing counter adds a unique dynamic to your drinks presentation and are available for an upgrade fee\*. *Ask for more details.*

- Item No: 600035 - Natural Wood
- 600195 - Grey Wood
- 600125 - Walnut Wood



H.: 900 mm  
D.: 600 mm  
W.: 1200 mm

### Wooden riser

For a natural, rustic style look use the wooden riser. This crate gives the perfect height to the dispensers and enables easy serving of drinks.

- Item No: 900503 - Oak Wood
- 900517 - Walnut Wood



H.: 200 mm  
D.: 200 mm  
W.: 200 mm

## Presentation solutions

### Grab 'n' Go concept

Ideal for take-away and meal deals, the Grab 'n' Go concept can be easily personalised with your own brand or venue. It enables you to rival the high street and the branded varieties of juices and smoothies while giving much greater profit margins.

Just fill the 100% recyclable 60ml, 150ml or 250ml Arc bottles, lock on the safety lid, add the collar and they are ready to serve.

Stored in the refrigerator, the drinks stay fresh for up to 5 days and are perfect displayed in multi decks, meeting rooms, mini bars and packed lunches. Fully supported by a range of point of sale materials, there is a wide variety of choice from printed strut cards highlighting drink benefits, to chalkboard and easels to deliver a hand written touch.

- Item No:**  
400410 - Arc bottles 60ml x 750 including black lid  
400408 - Arc bottles 150ml  
400409 - Arc bottles 250ml  
400413 - Black bottle lid for 150ml & 250ml Arc bottles  
400203 - Paper straws

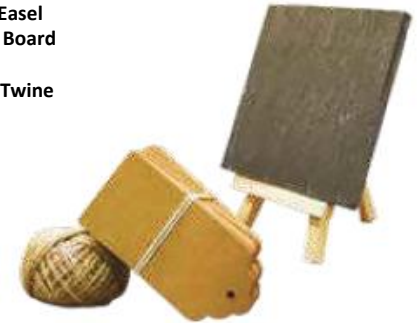
*Bottle Collars for selected flavours available (codes are flavour dependant)*



### POS materials

Recognising the differing point of sale (POS) needs, there are a range of materials available including printed strut cards highlighting drink benefits, card tags or chalkboard easel and pens to deliver a hand written touch.

- Item No:**  
710500 - Mini Wooden Easel  
710501 - Slate Message Board  
710503 - Chalk Marker  
710504 - Card Tags and Twine





## Presentation solutions

### Messaging back boards

Convey health benefits using point of sale signage such as these Hydration Station and Juice Lab messaging back boards to encourage people to help themselves. Easily assembled, the sturdy base unit works perfectly on your own counter or with Oranka Juice Station with the glass Yorkshire dispensers. Minimum usage applies, but the boards can also be purchased.

- 710705 – Hydration Station Display Board
- 710706 – Juice Lab Display Board



## Presentation solutions

### Jugs and carafes

There are an extensive variety of jug and carafe options to suit varying environments and needs. The polycarb Infusion Pitcher has a detachable inner for ice and fruit. The Fill Line Jug is perfect for accurately making up Oranka concentrates, with the black lid carafe ideal for hospitality set ups. Made out of plastic, both are dishwasher proof and robust, with the carafe being the perfect size to use with a dispenser back of house. The sealed lid also ensures no spillages during transportation.

Item No:  
450271 - Superior Jug (1.5L)  
450277 - Infusion Pitcher (1.7L)  
450280 - Fill Line Jug (2.5L)  
450265 - Plastic Carafe (1L)



### Reusable tumbler

Reusable plastic beakers can be provided for a small charge as part of your chosen concept to help you control portions and reduce your operational costs.

Item No: 400054 - Acrylic Tumbler (12oz)



### Wooden crushed ice trays

Natural wood crushed ice trays can be provided to hold and display bottles of juice from the Grab 'n' Go concept.

Item No: 900509 - Wooden tray



H.: 170 mm  
D.: 360 mm  
W.: 560 mm





## Dispensing solutions

### Bravanti dispenser

For large volume throughput this plumbed in dispenser is one of the most modern available and is made in the UK. It can be installed front or back of house (anywhere where it is connected to the water supply). It has a separate water tank to pre-chill the product and an internal water filter to optimise juice taste. Providing over 1,350 servings (200ml) with 3 different pouring points it is extremely reliable, hygienic, simple to use and easy to maintain. Fully lockable to avoid tampering and juice abuse it also has a subtle warning light to let staff know the juice is getting low. The 1+5 100% pure juice concentrate (5 litre box) can be used, as well as all other



H.: 935 mm  
D.: 695 mm  
W.: 470 mm



H.: 870 mm  
D.: 640 mm  
W.: 300 mm

### Brasserie dispenser

This is the simplest of all the Oranka plug in dispensing systems – incredibly reliable, easy to clean and maintain. Holding 2 x 10 litre ready to drink juices, including freshly pressed orange and cloudy apple, you can serve pre-chilled juices instantly. It is fully lockable to avoid tampering and juice abuse.

**Add a personal touch with your own branded frontage**  
Ask us for further details.



H.: 905 mm  
D.: 560 mm  
W.: 360 mm

## Dispensing solutions

### **Eskimo dispenser**

The Eskimo offers a choice of 10 or 20 litre capacities, is easily portable and takes up a minimum surface space (30 cm<sup>2</sup>). The Eskimo dispenser can be placed front or back of house. A low maintenance, simple, safe and secure option, this reliable dispensing system is HACCP compliant. It keeps our delicious juices fresh for up to 7 days, constantly maintaining the correct temperature and stirring the juice to stop it settling. The dispenser is fully lockable to avoid tampering and juice abuse. Our ready to drink juice range or our high quality concentrates (1+4 premium juice, 1+9 hospitality juice or the 1+19 all day fruit juice) are specifically designed to be used with the Eskimo.

The Eskimo also works really well back of house in combination with our jugs or other presentation solutions.



H.: 630 mm  
D.: 300 mm  
W.: 285 mm

H.: 800 mm  
D.: 300 mm  
W.: 285 mm

### **5 litre bag or 10 litre box with tap**

You can also use any of our wide range of ready to drink juices or premium juices and smoothies from the 5 litre bag or 10 litre box, as we can provide a simple tap to seal and allow pouring straight into our jugs or dispensers. Once opened the box just needs to be stored in the cold room or your upright refrigerator. With a 30 day refrigerated shelf life this is a perfect solution for a small venue.



### **Fill line 2.5 litre jug**

Making life easier, we have now introduced our Fill Line Jug, so you can easily mix our 1+4 premium breakfast/hospitality fruit juice, 1+9 breakfast/hospitality fruit juice or 1+19 fruit juice. Simply lined for exact measures the Fill Line Jug includes a rubber sealed pouring lid and being plastic is completely dishwasher safe.

**Item No: 450280 - Fill Line Jug (2.5L)**

Oranka Concentrate  
Fill Line for:

1+4 Premium Breakfast/Hospitality Fruit Juice  
1+9 Breakfast/Hospitality Fruit Juice  
1+19 Fruit Juice





## Ready to drink smoothies and juices

The perfect ready to drink option with a wide variety of flavours with no preservatives, artificial colourants or flavourings:

- Freshly pressed juices
- Not from concentrate juices
- Organic juices
- 100% fruit juices
- Fruit nectar juices
- 100% fruit smoothies
- Super juices
- Super smoothies
- Ice teas

These drinks have an unopened shelf life of up to nine months in ambient storage, which means you can save on precious refrigerated storage space. Once opened and chilled the juice can be served straight from the box with the simple integrated tap system and will still stay fresh for 30 days when refrigerated. The 5 litre bag and 10 litre bag in box benefits from minimum packaging which also means less waste and better for both your bottom line and the environment.

## Premium Juices

(supplied in 10 litre boxes)

- 170100 100% Freshly Pressed Orange Juice
- 170110 Sicilian Blood Orange
- 170330 100% Orange Juice (NFC) with Pulp
- 170240 100% Cloudy Apple Juice (NFC)
- 170130 NFC Orange Nectar Juice
- 170000 100% Apple Juice
- 170010 100% Orange Juice
- 170040 Multi-Vitamin Nectar
- 170160 100% Organic Orange Juice
- 170270 100% Freshly Pressed Orange Juice with Mango
- 170070 Pink Grapefruit
- 170440 Cloudy Lemonade with Freshly Pressed Lemon
- 170340 Cranberry Juice Drink



## Smoothies and Super Smoothies

(supplied in 10 litre boxes)

- 170140 100% Strawberry Smoothie
- 170190 100% Fruits of the Forest Smoothie
- 170220 100% Mango and Banana Smoothie
- 170310 100% Organic Mango & Passion Fruit Smoothie
- 170450 Guava Carrot & Melon Smoothie
- 170460 Kiwi Spinach Cucumber & Lime Smoothie
- 170480 Mango Rosehip & Goji Berry Smoothie



## Ice Teas

(supplied in 10 litre boxes)

- 170050 Ice Tea Peach
- 170060 Ice Tea Lemon

## Pre-Filled Cartons

(supplied in 1L cartons)

- 180151 100% Orange Juice (12 x 1L)
- 180152 100% Apple Juice (12 x 1L)
- 180153 Cranberry Juice (12 x 1L)



## Smoothie Cube Flavours

(supplied in 2 x 5 litre bags)

- 170335 100% Orange Juice (NFC) with Pulp
- 170245 100% Cloudy Apple Juice (NFC)
- 170135 NFC Orange Nectar Juice
- 170005 100% Apple Juice
- 170015 100% Orange Juice
- 170045 Multi-Vitamin Nectar
- 170145 Strawberry Smoothie
- 170225 Mango and Banana Smoothie
- 170465 Kiwi, Spinach, Cucumber & Lime Smoothie
- 170485 Mango Rosehip & Goji Berry Smoothie
- 170455 Guava Carrot & Melon Smoothie
- 170195 Fruits of the Forest Smoothie
- 170445 Cloudy Lemonade with Freshly Pressed Lemon Juice
- 170815 Apple and Rhubarb Juice





## **Oranka concentrates**

Refreshing juices with a broad selection of flavours with no preservatives, artificial colourants or flavourings and no added sugar. Simple to use, these juices save time and money and deliver a consistent product every time with assured accurate per unit costings.

### **1+4 100% Premium Fruit Juice**

Our finest 100% pure concentrate range which comes in 1 litre cartons to create 5 litres of product.

(supplied in 12 x 1 litre cartons)

110021 Apple 1+4

### **1+5 100% Fruit Juice**

100% pure juice perfect for large volume usage with Bravanti plumbed in dispenser where a 5 litre box makes 30 litres of product.

(supplied in 1 x 5 litre boxes)

260500 Orange 1+5

260510 Multivitamin 1+5

260520 Apple 1+5

260560 Pink Grapefruit 1+5

### **1+6 100% Fruit Juice**

Refreshing juices where a 5 litre box makes 35 litres of product.

(supplied in 1 x 5 litre boxes)

260580 Orange Nectar with Pulp 1+6



### **1+9 Nectar Juice**

Ideal for breakfast and hospitality with natural Stevia sweetener, this juice comes in 1 litre cartons and makes 10 litres of product.

(supplied in 12 x 1 litre cartons)

130091 Premium Orange Concentrate Nectar 1+9

130011 Multi-Vitamin 1+9

130051 Apple 1+9

130081 Apple and Cherry 1+9

**All concentrates are cleverly packaged, which means they save up to 95% on storage space and as a result create up to 95% less waste too. As they can be stored for up to one year in ambient conditions, they enable you to maximise your valuable refrigeration space.**



## Hydration range

An economical and healthy hydration juice for breakfast, hospitality and retail. This high quality 20% fruit juice with 2% sugar is also ideal for diabetics and available in an extensive range of 21 flavours. The variety of flavours means your offering can be easily tailored to suit the venue, time of day and season. In addition there is a 3% fruit juice option available in six flavours, which is perfect for sports teas, staff restaurants and care environments.

Using only natural aromas, the drinks are naturally high in Vitamin C, so great at boosting immune systems, with some flavours having added Zinc. To maximise efficiency of use, Hydration Juice comes in ½ litre cartons which make 10 litres end product and can be stored unopened at ambient temperatures for up to 12 months. Once made up the juice has a 3 day refrigerated shelf life in the dispenser.



## Hydration Juice with Vitamin C

(supplied in 12 x 0.5 litre cartons)

- 150021 Apple 1+19 Plus
- 150331 Apple & Cherry 1+19 Plus\*
- 150061 Blackcurrant 1+19 Plus
- 150271 Blueberry 1+19 Plus
- 150051 Cherry 1+19 Plus
- 150181 Cherry and Banana 1+19 Plus\*
- 150221 Cloudy Apple 1+19 Plus\*
- 150161 Elderflower 1+19 Plus
- 150281 Green Tea & Lemon 1+19 Plus\*
- 150351 Ice Tea Lime 1+19 Plus\*
- 150121 Ice Tea Peach 1+19 Plus
- 150361 Ice Tea Apple & Mint 1+19 Plus\*
- 150321 Lemon & Ginger 1+19 Plus\*
- 150101 Mandarin 1+19 Plus
- 150011 Multi-Vitamin 1+19 Plus
- 150001 Orange 1+19 Plus
- 150341 Orange & Passion Fruit 1+19 Plus\*
- 150141 Peach 1+19 Plus
- 150171 Pear 1+19 Plus\*
- 150081 Pineapple 1+19 Plus
- 150131 Raspberry 1+19 Plus
- 150211 Redberry 1+19 Plus\*
- 150201 Rhubarb 1+19 Plus\*
- 150111 Strawberry 1+19 Plus
- 150301 Winter Fruit Punch 1+19\*
- 160001 Frisco Orange 1+19
- 160011 Frisco Apple 1+19
- 160021 Frisco Blackcurrant 1+19
- 160041 Frisco Pineapple 1+19
- 160051 Frisco Watermelon 1+19

\*Also with added Zinc to help absorb Vitamin C

# Oranka's Commitment:

- No contracts
- Free site survey
- Free trial
- Free installations and training
- Free dispensers on loan\*
- Minimum order of £225+ VAT for free delivery

**Nationwide delivery, order  
by 12 noon for delivery  
within 48 hours.**

\*Minimum quantities required for free on loan equipment



# Oranka<sup>®</sup>

juice solutions

9 Wornal Park, Menmarsh Park  
Worminghall, Aylesbury  
Buckinghamshire HP18 9PH

T: 0330 998 0555  
[info@oranka.co.uk](mailto:info@oranka.co.uk)  
[www.oranka.co.uk](http://www.oranka.co.uk)